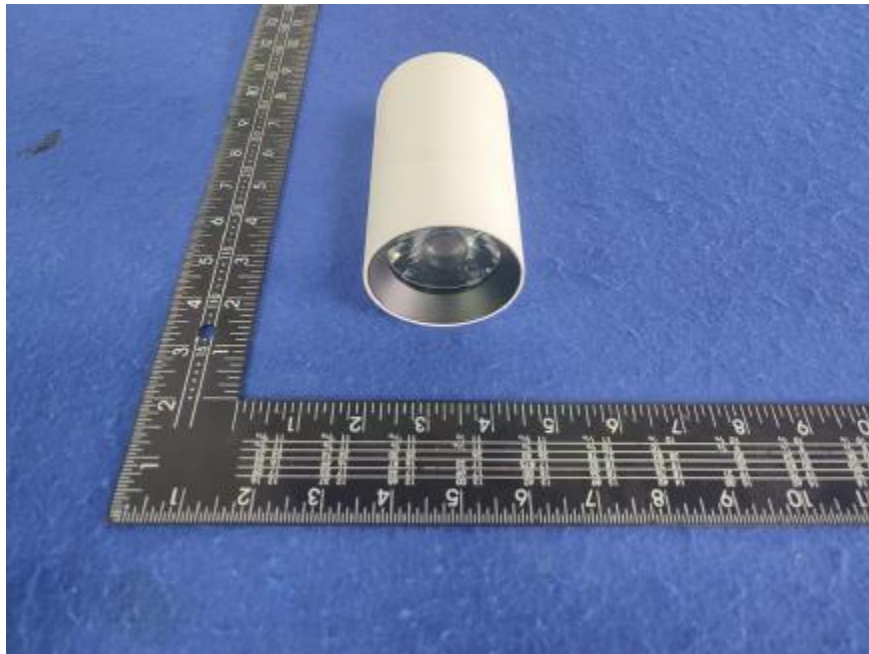


Luminaire Photograph



| | | |
|---------------------|---------|--------------------------|
| Light Output Ratio: | 85.2% | |
| Luminaire Power: | 14.59 W | |
| SHR Nominal: | 0.00 | Calculated using the TM5 |
| SHR Maximum: | 0.30 | fine grid method. |

C Range: 0 - 360DEG
C Interval: 30.0DEG
Test Speed: HIGH
Temperature: 25.3 °C
Operators: zoe
Test Date: 2025-1-9

γ Range: 0 - 180DEG
γ Interval: 1.0DEG
Test System: EVERFINE GO-SPEX500_V1 SYSTEM V2.00.461
Humidity: 65.0%
Test Distance: 3.160m [K=1.0000]
Remarks: LAMP: BXRE-30H1000-A-83 Ra: 95
LENS: PM-0132A 24R
NOT DRIVER: 48V
30minutes warm-up

LUMINOUS INTENSITY DISTRIBUTION DIAGRAM

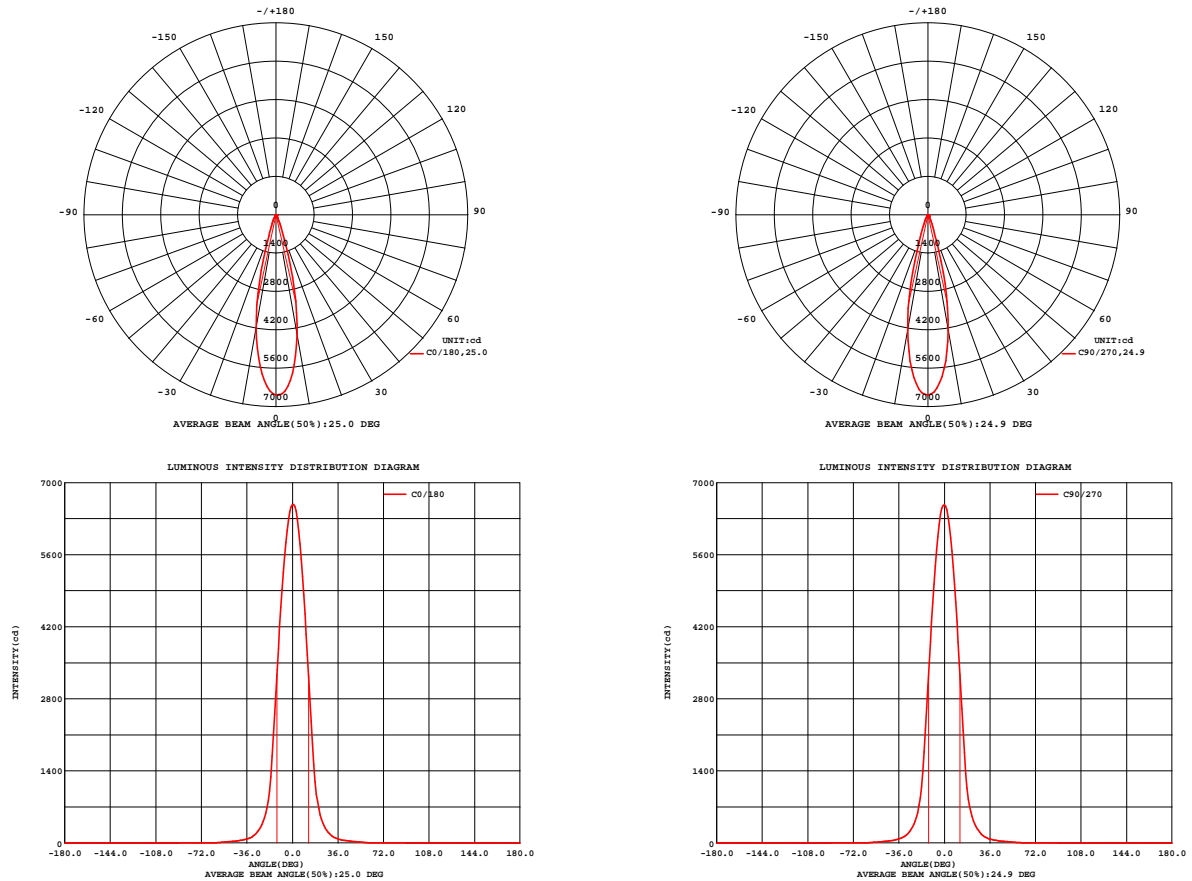


Fig. C0/C180

Fig. C90/C270

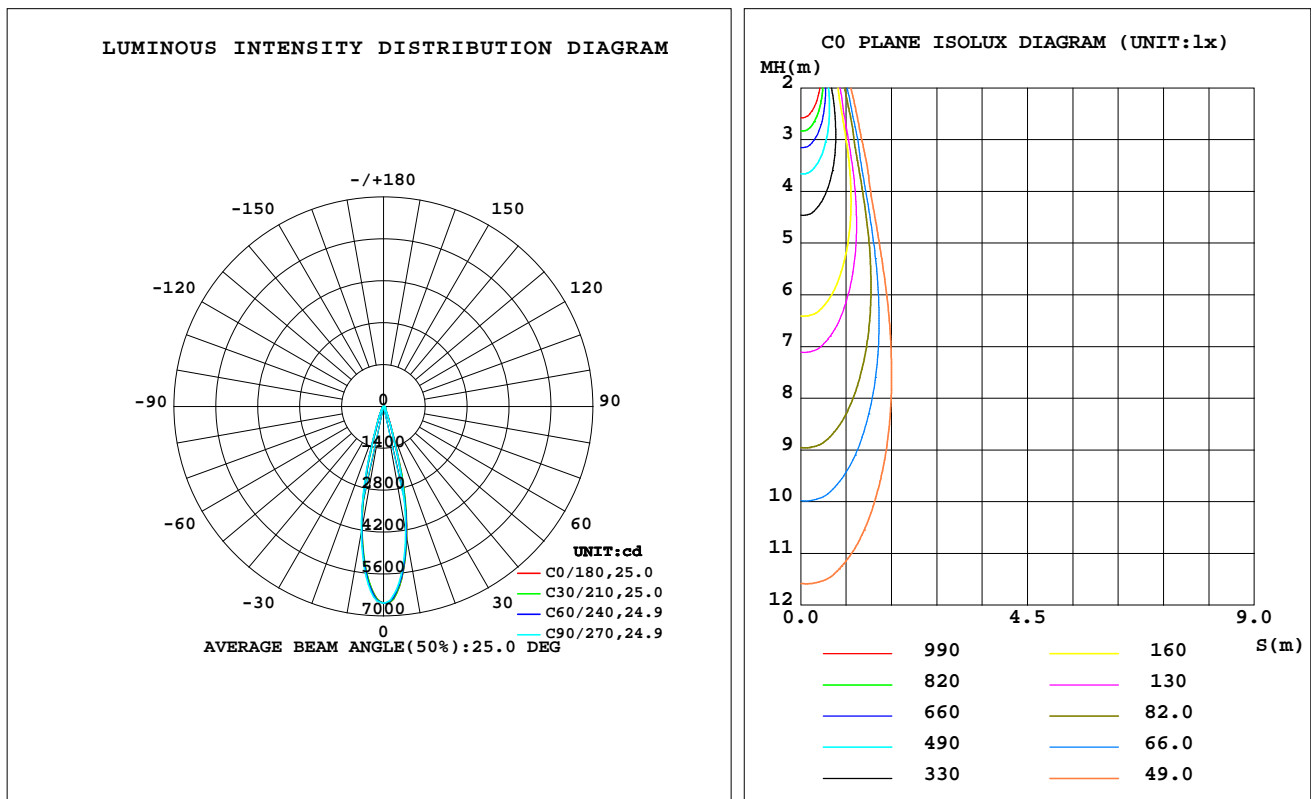
C Range: 0 - 360DEG
C Interval: 30.0DEG
Test Speed: HIGH
Temperature: 25.3 °C
Operators: zoe
Test Date: 2025-1-9

γ Range: 0 - 180DEG
 γ Interval: 1.0DEG
Test System: EVERFINE GO-SPEX500_V1 SYSTEM V2.00.461
Humidity: 65.0%
Test Distance: 3.160m [K=1.0000]
Remarks: LAMP: BXRE-30H1000-A-83 Ra: 95
LENS: PM-0132A 24R
NOT DRIVER: 48V
30minutes warm-up

LUMINAIRE PHOTOMETRIC TEST REPORT

| | | |
|---|---------------------|------------------------|
| Test:U:47.997V I:0.3039A P:14.586W PF:1.0000 Freq:0Hz Lamp Flux:1597.41x1 lm | | |
| NAME: OZ48-SB-64 | TYPE: | WEIGHT: |
| SPEC.: 3000K | DIM.: | SERIAL No.: 2501090043 |
| MFR.: RISE | SUR.: 0.002732585m2 | Shielding Angle: |

| DATA OF LAMP | | PHOTOMETRIC DATA Eff: 93.29 lm/W | | | |
|------------------|-----------|----------------------------------|--------|------------------------|----------|
| MODEL | Brideglux | Imax(cd) | 6579 | S/MH(C0/180) | 0.40 |
| NOMINAL POWER(W) | 15 | LOR(%) | 85.2 | S/MH(C90/270) | 0.40 |
| RATED VOLTAGE(V) | 48 | TOTAL FLUX(lm) | 1360.7 | η UP,DN(C0-180) | 0.0,42.7 |
| NOMINAL FLUX(lm) | 1597.41 | CIE CLASS | DIRECT | η UP,DN(C180-360) | 0.0,42.5 |
| LAMPS INSIDE | 1 | η up(%) | 0.0 | CIBSE SHR NOM | 0.00 |
| TEST VOLTAGE(V) | 48 | η down(%) | 85.2 | CIBSE SHR MAX | 0.30 |



C Range: 0 - 360DEG
C Interval: 30.0DEG
Test Speed: HIGH
Temperature:25.3℃
Operators:zoe
Test Date:2025-1-9

γ Range: 0 - 180DEG
 γ Interval: 1.0DEG
Test System:EVERFINE GO-SPEX500_V1 SYSTEM V2.00.461
Humidity:65.0%
Test Distance:3.160m [K=1.0000]
Remarks: LAMP:BXRE-30H1000-A-83 Ra:95
LENS:PM-0132A 24R
NOT DRIVER:48V
30minutes warm-up

ZONAL FLUX DIAGRAM

ZONAL FLUX DIAGRAM:

| γ | C0 | C45 | C90 | C135 | C180 | C225 | C270 | C315 | γ | Φ zone | Φ total | %lum,lamp |
|----------|-----------------------|--------|--------|--------|--------|--------|--------|--------|----------|-------------|--------------|-----------|
| 10 | 4447 | 4421 | 4297 | 4164 | 4198 | 4193 | 4291 | 4437 | 0- 10 | 513.9 | 513.9 | 37.8,32.2 |
| 20 | 809.1 | 746.4 | 713.2 | 676.7 | 684.5 | 674.8 | 727.9 | 766.5 | 10- 20 | 589.5 | 1103 | 81.1,69.1 |
| 30 | 162.7 | 153.9 | 153.0 | 143.7 | 149.9 | 142.8 | 151.4 | 158.9 | 20- 30 | 155.5 | 1259 | 92.5,78.8 |
| 40 | 55.83 | 55.56 | 54.32 | 53.14 | 54.29 | 53.45 | 53.70 | 55.09 | 30- 40 | 56.24 | 1315 | 96.7,82.3 |
| 50 | 25.58 | 26.18 | 26.47 | 25.88 | 25.89 | 25.08 | 24.52 | 24.96 | 40- 50 | 29.20 | 1344 | 98.8,84.2 |
| 60 | 5.647 | 5.998 | 6.220 | 6.005 | 5.910 | 5.300 | 4.927 | 5.360 | 50- 60 | 13.75 | 1358 | 99.8,85 |
| 70 | 1.009 | 0.9826 | 1.039 | 1.081 | 1.041 | 0.9209 | 1.003 | 1.042 | 60- 70 | 2.144 | 1360 | 100,85.2 |
| 80 | 0.0655 | 0.0447 | 0.0574 | 0.0419 | 0.0534 | 0.0413 | 0.0555 | 0.0424 | 70- 80 | 0.3690 | 1361 | 100,85.2 |
| 90 | 0 | 0 | 0 | 0 | 0 | 0 | 0 | 0 | 80- 90 | 0.0385 | 1361 | 100,85.2 |
| 100 | 0 | 0 | 0 | 0 | 0 | 0 | 0 | 0 | 90-100 | 0 | 1361 | 100,85.2 |
| 110 | 0 | 0 | 0 | 0 | 0 | 0 | 0 | 0 | 100-110 | 0 | 1361 | 100,85.2 |
| 120 | 0 | 0 | 0 | 0 | 0 | 0 | 0 | 0 | 110-120 | 0 | 1361 | 100,85.2 |
| 130 | 0 | 0 | 0 | 0 | 0 | 0 | 0 | 0 | 120-130 | 0 | 1361 | 100,85.2 |
| 140 | 0 | 0 | 0 | 0 | 0 | 0 | 0 | 0 | 130-140 | 0 | 1361 | 100,85.2 |
| 150 | 0 | 0 | 0 | 0 | 0 | 0 | 0 | 0 | 140-150 | 0 | 1361 | 100,85.2 |
| 160 | 0 | 0 | 0 | 0 | 0 | 0 | 0 | 0 | 150-160 | 0 | 1361 | 100,85.2 |
| 170 | 0 | 0 | 0 | 0 | 0 | 0 | 0 | 0 | 160-170 | 0 | 1361 | 100,85.2 |
| 180 | 0 | 0 | 0 | 0 | 0 | 0 | 0 | 0 | 170-180 | 0 | 1361 | 100,85.2 |
| DEG | LUMINOUS INTENSITY:cd | | | | | | | | | UNIT:lm | | |

C Range: 0 - 360DEG
C Interval: 30.0DEG
Test Speed: HIGH
Temperature:25.3℃
Operators:zoe
Test Date:2025-1-9

γ Range: 0 - 180DEG
 γ Interval: 1.0DEG
Test System:EVERFINE GO-SPEX500_V1 SYSTEM V2.00.461
Humidity:65.0%
Test Distance:3.160m [K=1.0000]
Remarks: LAMP:BXRE-30H1000-A-83 Ra:95
LENS:PM-0132A 24R
NOT DRIVER:48V
30minutes warm-up

LUMINANCE LIMITATION CURVES

Test:U:47.997V I:0.3039A P:14.586W PF:1.0000 Freq:0Hz
Lamp Flux:1597.4lx1 lm

NAME: OZ48-SB-64

TYPE:

WEIGHT:

SPEC.: 3000K

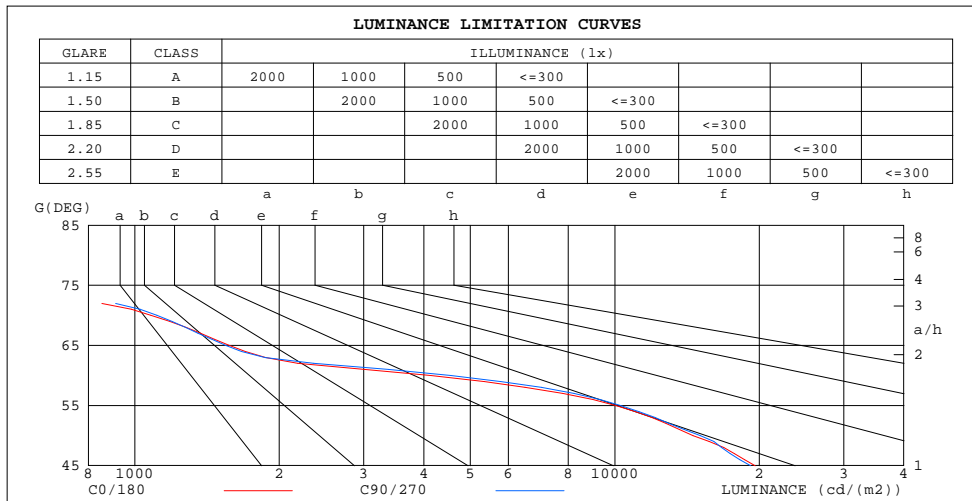
DIM.:

SERIAL No.: 2501090043

MFR.: RISE

SUR.: 0.002732585m2

Shielding Angle:



| LUMINANCE cd/(m2) | | |
|-------------------|--------|---------|
| G(180) | C0/180 | C90/270 |
| 85 | 220 | 210 |
| 80 | 138 | 121 |
| 75 | 239 | 306 |
| 70 | 1079 | 1112 |
| 65 | 1573 | 1547 |
| 60 | 4133 | 4554 |
| 55 | 10052 | 10286 |
| 50 | 14563 | 15075 |
| 45 | 19609 | 19186 |

C Range: 0 - 360DEG
C Interval: 30.0DEG
Test Speed: HIGH
Temperature:25.3℃
Operators:zoe
Test Date:2025-1-9

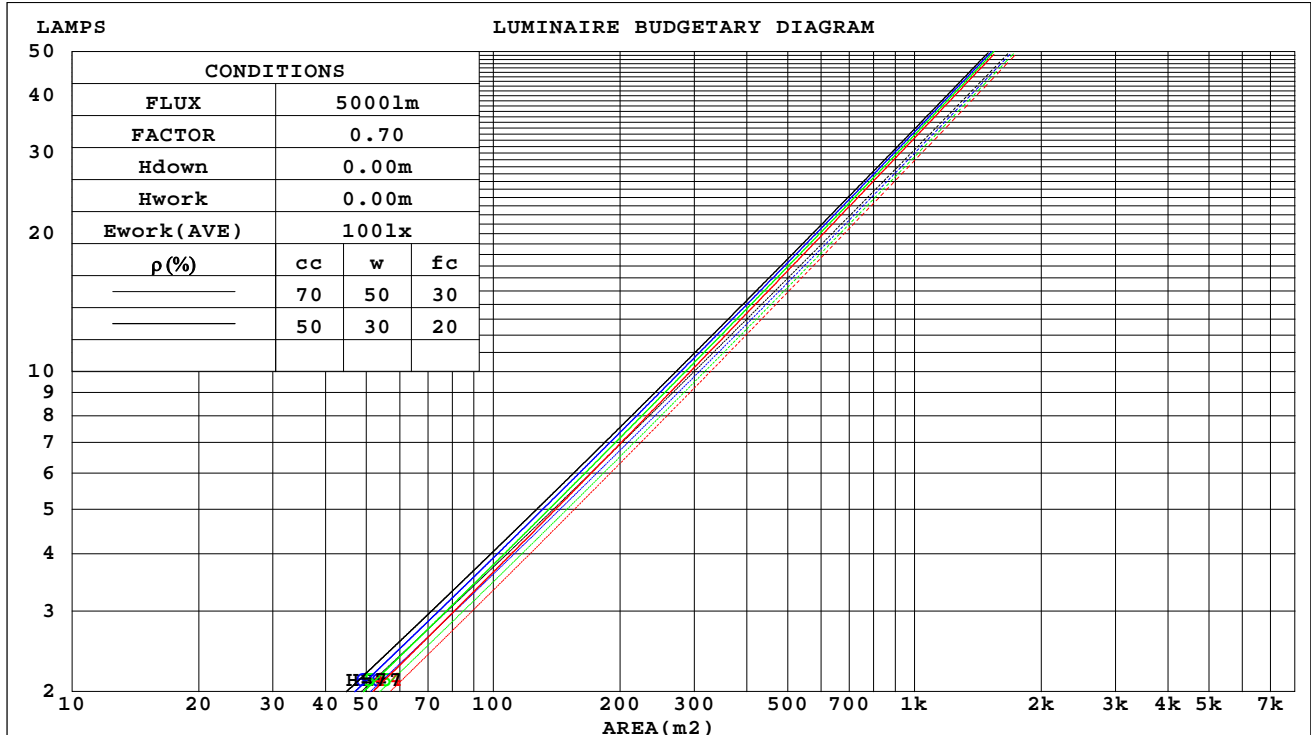
γ Range: 0 - 180DEG
γ Interval: 1.0DEG
Test System:EVERFINE GO-SPEX500_V1 SYSTEM V2.00.461
Humidity:65.0%
Test Distance:3.160m [K=1.0000]
Remarks: LAMP:BXRE-30H1000-A-83 Ra:95
LENS:PM-0132A 24R
NOT DRIVER:48V
30minutes warm-up

CU AND LUMINAIRE BUDGETARY ESTIMATE DIAGRAM

Test:U:47.997V I:0.3039A P:14.586W PF:1.0000 Freq:0Hz
Lamp Flux:1597.4lx1 lm

| | | |
|------------------|---------------------|------------------------|
| NAME: OZ48-SB-64 | TYPE: | WEIGHT: |
| SPEC.: 3000K | DIM.: | SERIAL No.: 2501090043 |
| MFR.: RISE | SUR.: 0.002732585m2 | Shielding Angle: |

| ρ_{cc} | 80% | | | 70% | | | 50% | | | 30% | | | 10% | | | 0 |
|-------------|-----------------------|------|------|-----|-----|-----|---------------------------------|-----|-----|-----|-----|-----|-----|-----|-----|-----|
| ρ_w | 50% | 30% | 10% | 50% | 30% | 10% | 50% | 30% | 10% | 50% | 30% | 10% | 50% | 30% | 10% | 0 |
| ρ_{fc} | 20% | | | 20% | | | 20% | | | 20% | | | 20% | | | 0 |
| RCR | RCR:Room Cavity Ratio | | | | | | Coefficients of Utilization(CU) | | | | | | | | | |
| 0.0 | 1.01 | 1.01 | 1.01 | .99 | .99 | .99 | .95 | .95 | .95 | .91 | .91 | .91 | .87 | .87 | .87 | .85 |
| 1.0 | .96 | .95 | .93 | .94 | .93 | .92 | .91 | .90 | .89 | .88 | .87 | .86 | .85 | .84 | .84 | .82 |
| 2.0 | .92 | .89 | .87 | .90 | .88 | .86 | .88 | .86 | .84 | .85 | .84 | .82 | .83 | .82 | .81 | .79 |
| 3.0 | .88 | .85 | .82 | .87 | .84 | .82 | .84 | .82 | .80 | .83 | .81 | .79 | .81 | .79 | .78 | .77 |
| 4.0 | .84 | .81 | .78 | .83 | .80 | .78 | .82 | .79 | .77 | .80 | .78 | .76 | .79 | .77 | .75 | .74 |
| 5.0 | .81 | .78 | .75 | .80 | .77 | .75 | .79 | .76 | .74 | .78 | .75 | .74 | .77 | .75 | .73 | .72 |
| 6.0 | .78 | .75 | .72 | .78 | .75 | .72 | .77 | .74 | .72 | .76 | .73 | .71 | .75 | .72 | .71 | .70 |
| 7.0 | .76 | .72 | .70 | .75 | .72 | .70 | .75 | .72 | .69 | .74 | .71 | .69 | .73 | .71 | .69 | .68 |
| 8.0 | .74 | .70 | .68 | .73 | .70 | .68 | .72 | .70 | .67 | .72 | .69 | .67 | .71 | .69 | .67 | .66 |
| 9.0 | .72 | .68 | .66 | .71 | .68 | .66 | .71 | .68 | .66 | .70 | .67 | .65 | .69 | .67 | .65 | .64 |
| 10.0 | .70 | .66 | .64 | .69 | .66 | .64 | .69 | .66 | .64 | .68 | .66 | .64 | .68 | .65 | .64 | .63 |



C Range: 0 - 360DEG
C Interval: 30.0DEG
Test Speed: HIGH
Temperature:25.3℃
Operators:zoe
Test Date:2025-1-9

γ Range: 0 - 180DEG
 γ Interval: 1.0DEG
Test System:EVERFINE GO-SPEX500_V1 SYSTEM V2.00.461
Humidity:65.0%
Test Distance:3.160m [K=1.0000]
Remarks: LAMP:BXRE-30H1000-A-83 Ra:95
LENS:PM-0132A 24R
NOT DRIVER:48V
30minutes warm-up

WEC AND CCEC

| | | |
|---|---------------------|------------------------|
| Test:U:47.997V I:0.3039A P:14.586W PF:1.0000 Freq:0Hz Lamp Flux:1597.4lx1 lm | | |
| NAME: OZ48-SB-64 | TYPE: | WEIGHT: |
| SPEC.: 3000K | DIM.: | SERIAL No.: 2501090043 |
| MFR.: RISE | SUR.: 0.002732585m2 | Shielding Angle: |

| pcc | 80% | | | 70% | | | 50% | | | 30% | | | 10% | | | 0 |
|------|-----------------------|------|------|------|------|------|---------------------------------|------|------|------|------|------|------|------|------|---|
| pw | 50% | 30% | 10% | 50% | 30% | 10% | 50% | 30% | 10% | 50% | 30% | 10% | 50% | 30% | 10% | 0 |
| pfc | 20% | | | 20% | | | 20% | | | 20% | | | 20% | | | 0 |
| RCR | RCR:Room Cavity Ratio | | | | | | Wall Exitance Coefficients(WEC) | | | | | | | | | |
| 0.0 | | | | | | | | | | | | | | | | |
| 1.0 | .117 | .066 | .021 | .111 | .063 | .020 | .101 | .058 | .018 | .091 | .052 | .017 | .082 | .048 | .015 | |
| 2.0 | .108 | .059 | .018 | .104 | .057 | .018 | .095 | .053 | .016 | .087 | .049 | .015 | .080 | .045 | .014 | |
| 3.0 | .101 | .054 | .016 | .097 | .052 | .016 | .090 | .049 | .015 | .083 | .046 | .014 | .077 | .043 | .013 | |
| 4.0 | .095 | .049 | .014 | .092 | .048 | .014 | .085 | .045 | .014 | .080 | .043 | .013 | .074 | .040 | .012 | |
| 5.0 | .089 | .045 | .013 | .086 | .044 | .013 | .081 | .042 | .012 | .076 | .040 | .012 | .072 | .038 | .012 | |
| 6.0 | .084 | .042 | .012 | .082 | .041 | .012 | .077 | .040 | .012 | .073 | .038 | .011 | .069 | .036 | .011 | |
| 7.0 | .080 | .040 | .011 | .078 | .039 | .011 | .074 | .037 | .011 | .070 | .036 | .010 | .067 | .035 | .010 | |
| 8.0 | .076 | .037 | .010 | .074 | .037 | .010 | .071 | .035 | .010 | .068 | .034 | .010 | .065 | .033 | .010 | |
| 9.0 | .073 | .035 | .010 | .071 | .035 | .010 | .068 | .034 | .010 | .065 | .033 | .009 | .062 | .032 | .009 | |
| 10.0 | .069 | .033 | .009 | .068 | .033 | .009 | .065 | .032 | .009 | .063 | .031 | .009 | .060 | .030 | .009 | |

| pcc | 80% | | | 70% | | | 50% | | | 30% | | | 10% | | | 0 | |
|------|-----------------------|------|------|------|------|------|--|------|------|------|------|------|------|------|------|---|--|
| pw | 50% | 30% | 10% | 50% | 30% | 10% | 50% | 30% | 10% | 50% | 30% | 10% | 50% | 30% | 10% | 0 | |
| pfc | 20% | | | 20% | | | 20% | | | 20% | | | 20% | | | 0 | |
| RCR | RCR:Room Cavity Ratio | | | | | | Ceiling Cavity Exitance Coefficients(CCEC) | | | | | | | | | | |
| 0.0 | .162 | .162 | .162 | .139 | .139 | .139 | .095 | .095 | .095 | .054 | .054 | .054 | .017 | .017 | .017 | | |
| 1.0 | .143 | .134 | .126 | .123 | .115 | .109 | .084 | .079 | .075 | .048 | .046 | .044 | .015 | .015 | .014 | | |
| 2.0 | .128 | .113 | .100 | .110 | .097 | .087 | .075 | .067 | .061 | .043 | .039 | .035 | .014 | .013 | .012 | | |
| 3.0 | .115 | .096 | .082 | .099 | .083 | .071 | .068 | .058 | .050 | .039 | .034 | .029 | .013 | .011 | .010 | | |
| 4.0 | .105 | .083 | .067 | .090 | .072 | .058 | .062 | .050 | .041 | .036 | .029 | .024 | .011 | .010 | .008 | | |
| 5.0 | .096 | .073 | .056 | .082 | .063 | .049 | .057 | .044 | .034 | .033 | .026 | .020 | .011 | .008 | .007 | | |
| 6.0 | .088 | .064 | .047 | .076 | .056 | .041 | .052 | .039 | .029 | .030 | .023 | .017 | .010 | .008 | .006 | | |
| 7.0 | .082 | .057 | .040 | .070 | .050 | .035 | .048 | .035 | .025 | .028 | .021 | .015 | .009 | .007 | .005 | | |
| 8.0 | .076 | .052 | .035 | .065 | .045 | .030 | .045 | .031 | .022 | .026 | .019 | .013 | .009 | .006 | .004 | | |
| 9.0 | .071 | .047 | .030 | .061 | .041 | .027 | .042 | .029 | .019 | .025 | .017 | .011 | .008 | .006 | .004 | | |
| 10.0 | .067 | .043 | .027 | .058 | .037 | .023 | .040 | .026 | .017 | .023 | .015 | .010 | .008 | .005 | .003 | | |

C Range: 0 - 360DEG
C Interval: 30.0DEG
Test Speed: HIGH
Temperature:25.3℃
Operators:zoe
Test Date:2025-1-9

γ Range: 0 - 180DEG
γ Interval: 1.0DEG
Test System:EVERFINE GO-SPEX500_V1 SYSTEM V2.00.461
Humidity:65.0%
Test Distance:3.160m [K=1.0000]
Remarks: LAMP:BXRE-30H1000-A-83 Ra:95
LENS:PM-0132A 24R
NOT DRIVER:48V
30minutes warm-up

UGR(Unified Glare Rating) Table

| | | | | | | | | | | |
|---|------------------|------|------|------|---------------------|----------------|------|------------------------|------|------|
| Test:U:47.997V I:0.3039A P:14.586W PF:1.0000 Freq:0Hz Lamp Flux:1597.4lx1 lm | | | | | | | | | | |
| NAME: OZ48-SB-64 | | | | | TYPE: | | | WEIGHT: | | |
| SPEC.: 3000K | | | | | DIM.: | | | SERIAL No.: 2501090043 | | |
| MFR.: RISE | | | | | SUR.: 0.002732585m2 | | | Shielding Angle: | | |
| ceiling/cavity | 0.7 | 0.7 | 0.5 | 0.5 | 0.3 | 0.7 | 0.7 | 0.5 | 0.5 | 0.3 |
| walls | 0.5 | 0.3 | 0.5 | 0.3 | 0.3 | 0.5 | 0.3 | 0.5 | 0.3 | 0.3 |
| working plane | 0.2 | 0.2 | 0.2 | 0.2 | 0.2 | 0.2 | 0.2 | 0.2 | 0.2 | 0.2 |
| Room dimensions | Viewed crosswise | | | | | Viewed endwise | | | | |
| x = 2H y = 2H | 11.9 | 12.5 | 12.1 | 12.7 | 12.8 | 11.7 | 12.4 | 11.9 | 12.5 | 12.7 |
| 3H | 11.7 | 12.3 | 12.0 | 12.5 | 12.7 | 11.6 | 12.2 | 11.8 | 12.4 | 12.6 |
| 4H | 11.7 | 12.2 | 11.9 | 12.4 | 12.7 | 11.5 | 12.1 | 11.8 | 12.3 | 12.5 |
| 6H | 11.6 | 12.1 | 11.9 | 12.4 | 12.6 | 11.4 | 12.0 | 11.7 | 12.2 | 12.5 |
| 8H | 11.5 | 12.1 | 11.8 | 12.3 | 12.6 | 11.4 | 11.9 | 11.7 | 12.2 | 12.4 |
| 12H | 11.5 | 12.0 | 11.8 | 12.3 | 12.5 | 11.4 | 11.9 | 11.7 | 12.1 | 12.4 |
| 4H 2H | 11.7 | 12.3 | 12.0 | 12.5 | 12.7 | 11.6 | 12.2 | 11.9 | 12.4 | 12.6 |
| 3H | 11.6 | 12.1 | 11.9 | 12.4 | 12.6 | 11.5 | 12.0 | 11.8 | 12.2 | 12.5 |
| 4H | 11.5 | 12.0 | 11.8 | 12.3 | 12.6 | 11.4 | 11.8 | 11.7 | 12.1 | 12.4 |
| 6H | 11.4 | 11.8 | 11.8 | 12.1 | 12.5 | 11.3 | 11.7 | 11.6 | 12.0 | 12.4 |
| 8H | 11.3 | 11.7 | 11.7 | 12.1 | 12.4 | 11.2 | 11.6 | 11.6 | 11.9 | 12.3 |
| 12H | 11.3 | 11.6 | 11.7 | 12.0 | 12.4 | 11.2 | 11.5 | 11.6 | 11.9 | 12.3 |
| 8H 4H | 11.3 | 11.7 | 11.7 | 12.1 | 12.4 | 11.2 | 11.6 | 11.6 | 12.0 | 12.3 |
| 6H | 11.2 | 11.5 | 11.7 | 11.9 | 12.3 | 11.1 | 11.4 | 11.5 | 11.8 | 12.2 |
| 8H | 11.2 | 11.5 | 11.6 | 11.9 | 12.3 | 11.0 | 11.3 | 11.5 | 11.7 | 12.2 |
| 12H | 11.1 | 11.3 | 11.6 | 11.8 | 12.3 | 11.0 | 11.2 | 11.4 | 11.7 | 12.1 |
| 12H 4H | 11.3 | 11.6 | 11.7 | 12.0 | 12.4 | 11.2 | 11.5 | 11.6 | 11.9 | 12.3 |
| 6H | 11.2 | 11.5 | 11.6 | 11.9 | 12.3 | 11.0 | 11.3 | 11.5 | 11.7 | 12.2 |
| 8H | 11.1 | 11.3 | 11.6 | 11.8 | 12.3 | 11.0 | 11.2 | 11.4 | 11.7 | 12.1 |
| Variations with the observer position at spacings(CIE Pub.117): | | | | | | | | | | |
| S = 1.0H | + 2.0 / - 4.2 | | | | | + 2.0 / - 3.9 | | | | |
| 1.5H | + 2.2 / - 2.0 | | | | | + 2.1 / - 2.0 | | | | |
| 2.0H | + 3.7 / -10.5 | | | | | + 3.6 / -10.9 | | | | |

CIE Pub.117, 1597 lm Total Lamp Luminous Flux Correct (8log(F/F0) = 1.6)
Area: 0.00273258 m2

C Range: 0 - 360DEG
C Interval: 30.0DEG
Test Speed: HIGH
Temperature:25.3℃
Operators:zoe
Test Date:2025-1-9

γ Range: 0 - 180DEG
γ Interval: 1.0DEG
Test System:EVERFINE GO-SPEX500_V1 SYSTEM V2.00.461
Humidity:65.0%
Test Distance:3.160m [K=1.0000]
Remarks: LAMP:BXRE-30H1000-A-83 Ra:95
LENS:PM-0132A 24R
NOT DRIVER:48V
30minutes warm-up

UTILIZATION FACTORS TABLE

| | | |
|---|---------------------|------------------------|
| Test:U:47.997V I:0.3039A P:14.586W PF:1.0000 Freq:0Hz Lamp Flux:1597.4lx1 lm | | |
| NAME: OZ48-SB-64 | TYPE: | WEIGHT: |
| SPEC.: 3000K | DIM.: | SERIAL No.: 2501090043 |
| MFR.: RISE | SUR.: 0.002732585m2 | Shielding Angle: |

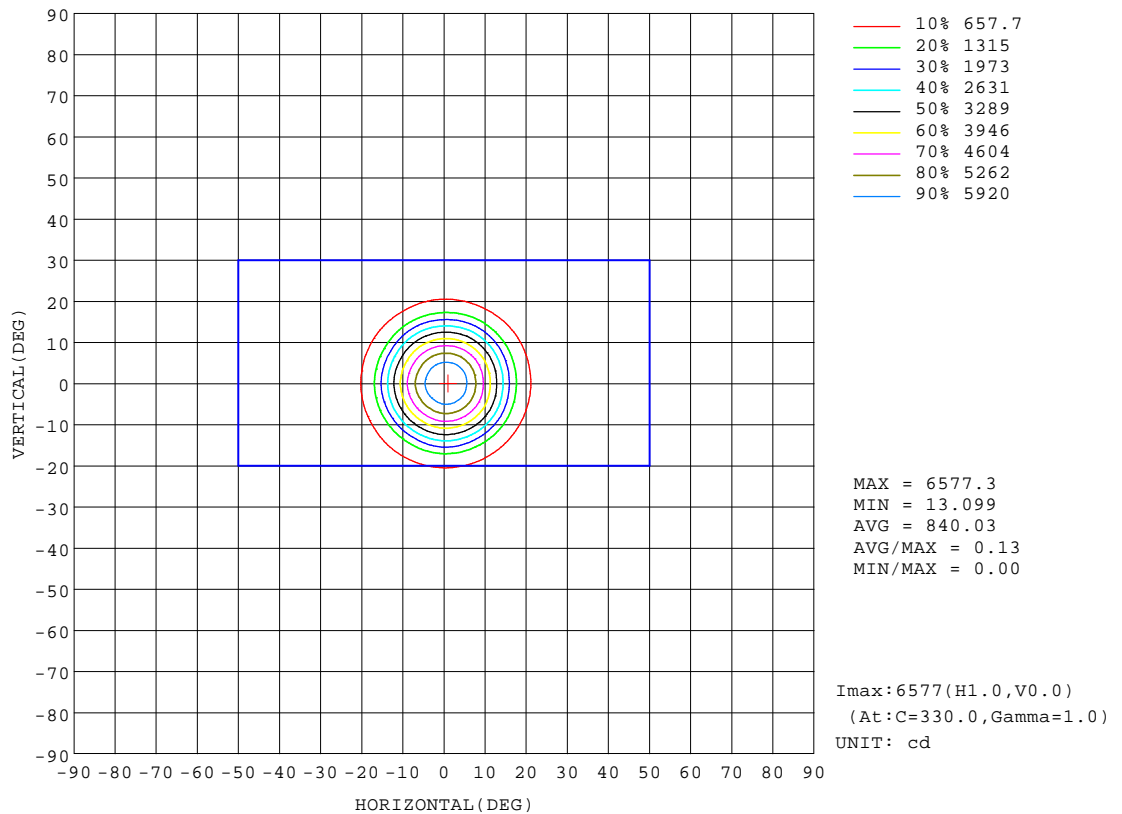
| REFLECTANCE | | | | | | | | | | |
|----------------------------------|---|-----|-----------|-----|-----|-----|-----|---------------|-----|--------|
| Ceiling | 0.8 | 0.8 | 0.8 | 0.7 | 0.7 | 0.7 | 0.5 | 0.5 | 0.5 | 0 |
| Walls | 0.7 | 0.5 | 0.3 | 0.7 | 0.5 | 0.3 | 0.7 | 0.5 | 0.3 | 0 |
| Working plane | 0.2 | 0.2 | 0.2 | 0.2 | 0.2 | 0.2 | 0.2 | 0.2 | 0.2 | 0 |
| ROOM INDEX | UTILIZATION FACTORS(PERCENT) $k(RI) \times RCR = 5$ | | | | | | | | | |
| k = 0.60 | 76 | 71 | 68 | 76 | 71 | 68 | 75 | 71 | 68 | 65 |
| 0.80 | 82 | 78 | 75 | 82 | 77 | 75 | 81 | 77 | 74 | 71 |
| 1.00 | 86 | 81 | 78 | 85 | 81 | 78 | 84 | 81 | 78 | 75 |
| 1.25 | 89 | 85 | 82 | 88 | 84 | 82 | 86 | 83 | 81 | 78 |
| 1.50 | 91 | 87 | 85 | 90 | 87 | 84 | 88 | 86 | 83 | 80 |
| 2.00 | 93 | 90 | 87 | 92 | 89 | 87 | 90 | 87 | 85 | 81 |
| 2.50 | 94 | 91 | 89 | 93 | 90 | 88 | 91 | 88 | 87 | 82 |
| 3.00 | 96 | 93 | 91 | 94 | 92 | 90 | 91 | 90 | 88 | 83 |
| 4.00 | 97 | 95 | 93 | 96 | 94 | 92 | 93 | 91 | 90 | 84 |
| 5.00 | 98 | 97 | 95 | 97 | 95 | 94 | 93 | 92 | 91 | 85 |
| ROOM INDEX | UF(total) | | | | | | | | | Direct |
| According to DIN EN 13032-2 2004 | | | Suspended | | | | | SHRNOM = 1.25 | | |

C Range: 0 - 360DEG
C Interval: 30.0DEG
Test Speed: HIGH
Temperature:25.3℃
Operators:zoe
Test Date:2025-1-9

γ Range: 0 - 180DEG
γ Interval: 1.0DEG
Test System:EVERFINE GO-SPEX500_V1 SYSTEM V2.00.461
Humidity:65.0%
Test Distance:3.160m [K=1.0000]
Remarks: LAMP:BXRE-30H1000-A-83 Ra:95
LENS:PM-0132A 24R
NOT DRIVER:48V
30minutes warm-up

ISOCANDELA DIAGRAM

| | | |
|---|---------------------|------------------------|
| Test:U:47.997V I:0.3039A P:14.586W PF:1.0000 Freq:0Hz Lamp Flux:1597.41x1 lm | | |
| NAME: OZ48-SB-64 | TYPE: | WEIGHT: |
| SPEC.: 3000K | DIM.: | SERIAL No.: 2501090043 |
| MFR.: RISE | SUR.: 0.002732585m2 | Shielding Angle: |

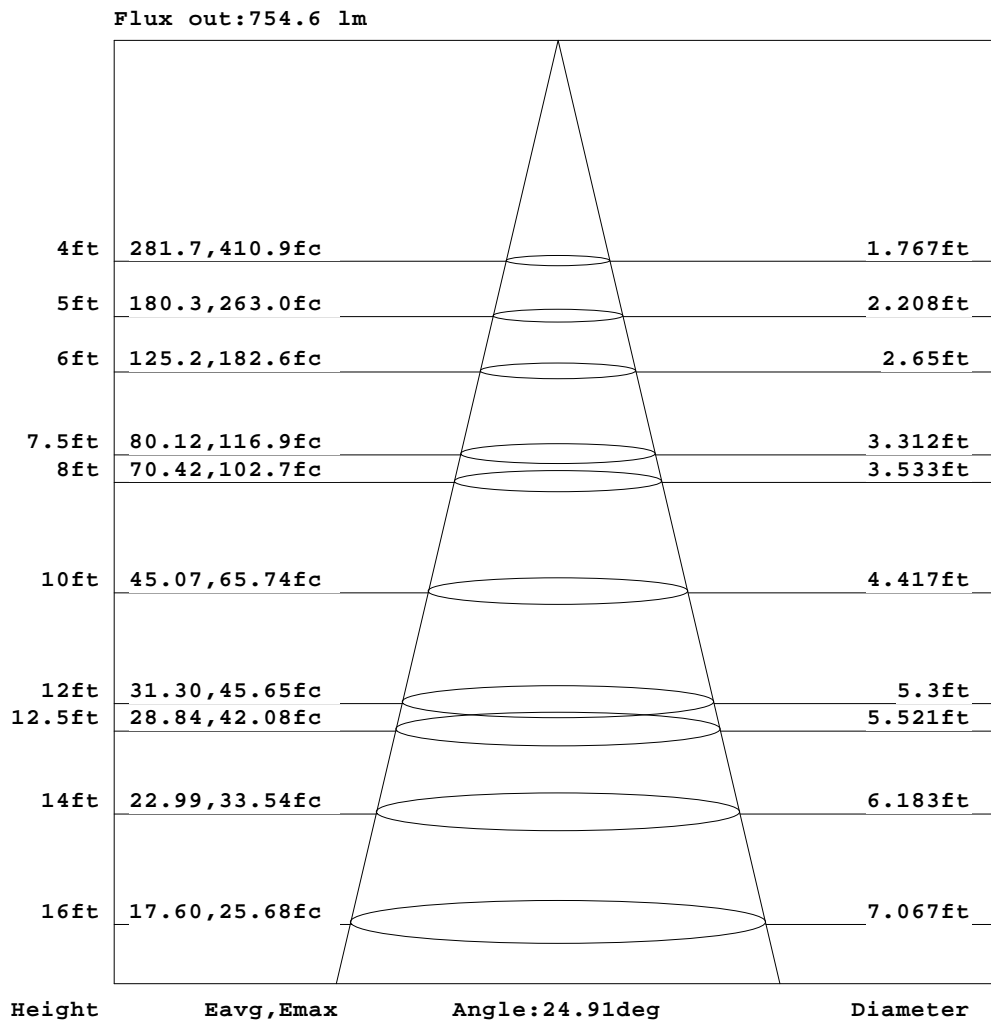


C Range: 0 - 360DEG
C Interval: 30.0DEG
Test Speed: HIGH
Temperature:25.3℃
Operators:zoe
Test Date:2025-1-9

γ Range: 0 - 180DEG
γ Interval: 1.0DEG
Test System:EVERFINE GO-SPEX500_V1 SYSTEM V2.00.461
Humidity:65.0%
Test Distance:3.160m [K=1.0000]
Remarks: LAMP:BXRE-30H1000-A-83 Ra:95
LENS:PM-0132A 24R
NOT DRIVER:48V
30minutes warm-up

AAI Figure

| | | |
|---|---------------------|------------------------|
| Test:U:47.997V I:0.3039A P:14.586W PF:1.0000 Freq:0Hz Lamp Flux:1597.4lx1 lm | | |
| NAME: OZ48-SB-64 | TYPE: | WEIGHT: |
| SPEC.: 3000K | DIM.: | SERIAL No.: 2501090043 |
| MFR.: RISE | SUR.: 0.002732585m2 | Shielding Angle: |



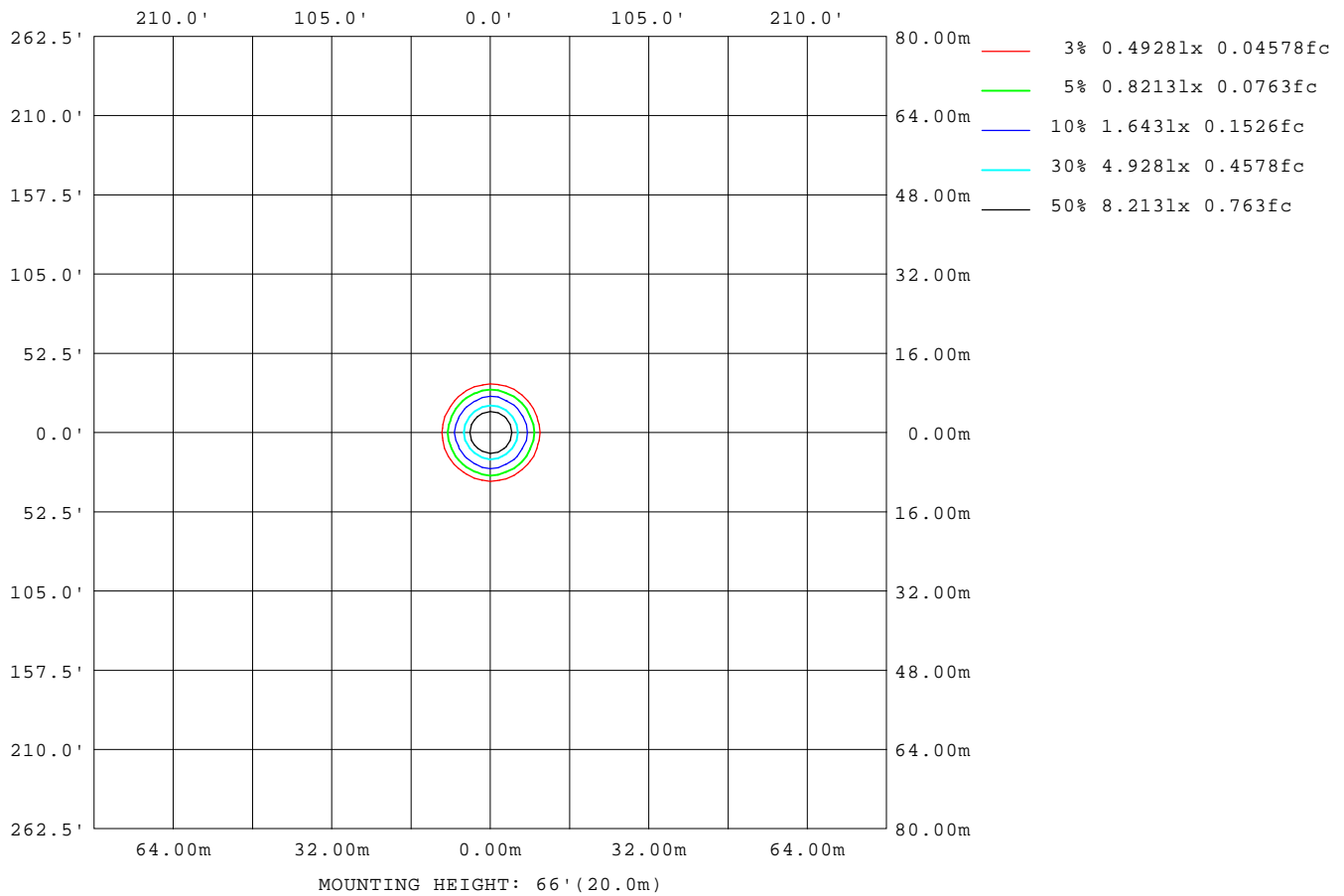
Note: The Curves indicate the illuminated area and the average illumination when the luminaire is at different distance.

C Range: 0 - 360DEG
C Interval: 30.0DEG
Test Speed: HIGH
Temperature: 25.3 °C
Operators: zoe
Test Date: 2025-1-9

γ Range: 0 - 180DEG
γ Interval: 1.0DEG
Test System: EVERFINE GO-SPEX500_V1 SYSTEM V2.00.461
Humidity: 65.0%
Test Distance: 3.160m [K=1.0000]
Remarks: LAMP: BXRE-30H1000-A-83 Ra: 95
LENS: PM-0132A 24R
NOT DRIVER: 48V
30minutes warm-up

ISOLUX DIAGRAM

| | | |
|---|---------------------|------------------------|
| Test:U:47.997V I:0.3039A P:14.586W PF:1.0000 Freq:0Hz Lamp Flux:1597.4lx1 lm | | |
| NAME: OZ48-SB-64 | TYPE: | WEIGHT: |
| SPEC.: 3000K | DIM.: | SERIAL No.: 2501090043 |
| MFR.: RISE | SUR.: 0.002732585m2 | Shielding Angle: |



C Range: 0 - 360DEG
C Interval: 30.0DEG
Test Speed: HIGH
Temperature: 25.3 °C
Operators: zoe
Test Date: 2025-1-9

γ Range: 0 - 180DEG
γ Interval: 1.0DEG
Test System: EVERFINE GO-SPEX500_V1 SYSTEM V2.00.461
Humidity: 65.0%
Test Distance: 3.160m [K=1.0000]
Remarks: LAMP: BXRE-30H1000-A-83 Ra: 95
LENS: PM-0132A 24R
NOT DRIVER: 48V
30minutes warm-up

LED Avg.L Report

| | | |
|---|---------------------|------------------------|
| Test:U:47.997V I:0.3039A P:14.586W PF:1.0000 Freq:0Hz Lamp Flux:1597.41x1 lm | | |
| NAME: OZ48-SB-64 | TYPE: | WEIGHT: |
| SPEC.: 3000K | DIM.: | SERIAL No.: 2501090043 |
| MFR.: RISE | SUR.: 0.002732585m2 | Shielding Angle: |

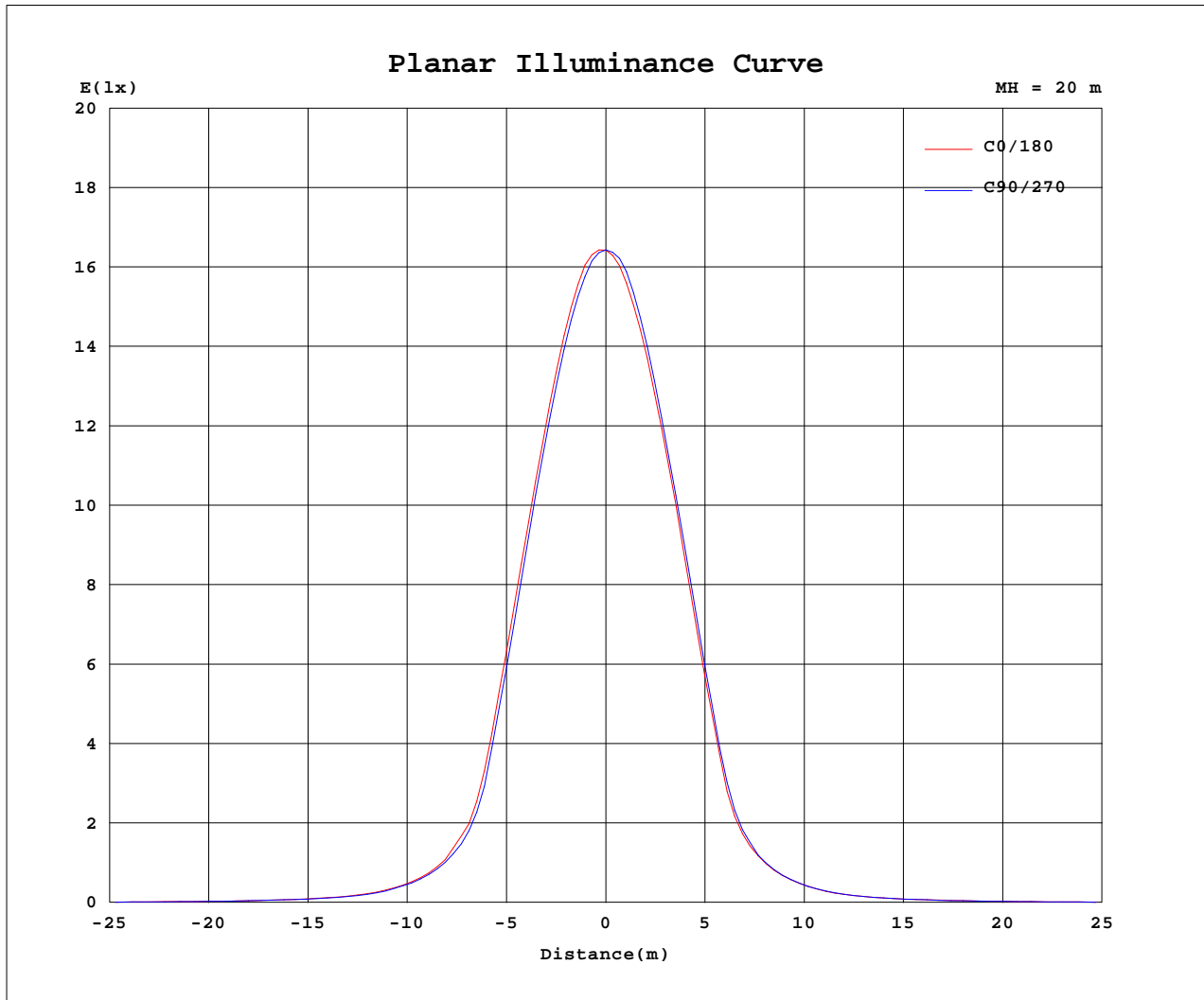
| AvgL | cd/m2 |
|----------------|-------|
| L_0~180(65)av | 1574 |
| L_0~180(75)av | 228 |
| L_0~180(85)av | 209 |
| L_90~270(65)av | 1538 |
| L_90~270(75)av | 264 |
| L_90~270(85)av | 199 |
| L_45(65)av | 1570 |
| L_45(75)av | 220 |
| L_45(85)av | 118 |

Standard: GB/T 29293-2012

C Range: 0 - 360DEG
C Interval: 30.0DEG
Test Speed: HIGH
Temperature:25.3℃
Operators:zoe
Test Date:2025-1-9

γ Range: 0 - 180DEG
γ Interval: 1.0DEG
Test System:EVERFINE GO-SPEX500_V1 SYSTEM V2.00.461
Humidity:65.0%
Test Distance:3.160m [K=1.0000]
Remarks: LAMP:BXRE-30H1000-A-83 Ra:95
LENS:PM-0132A 24R
NOT DRIVER:48V
30minutes warm-up

Planar Illuminance Curve



C Range: 0 - 360DEG
 C Interval: 30.0DEG
 Test Speed: HIGH
 Temperature: 25.3 °C
 Operators: zoe
 Test Date: 2025-1-9

γ Range: 0 - 180DEG
 γ Interval: 1.0DEG
 Test System: EVERFINE GO-SPEX500_V1 SYSTEM V2.00.461
 Humidity: 65.0%
 Test Distance: 3.160m [K=1.0000]
 Remarks: LAMP: BXRE-30H1000-A-83 Ra: 95
 LENS: PM-0132A 24R
 NOT DRIVER: 48V
 30minutes warm-up



LUMINOUS DISTRIBUTION INTENSITY DATA

| | | |
|---|---------------------|------------------------|
| Test:U:47.997V I:0.3039A P:14.586W PF:1.0000 Freq:0Hz Lamp Flux:1597.4lx1 lm | | |
| NAME: OZ48-SB-64 | TYPE: | WEIGHT: |
| SPEC.: 3000K | DIM.: | SERIAL No.: 2501090043 |
| MFR.: RISE | SUR.: 0.002732585m2 | Shielding Angle: |

Table--1

UNIT: cd

| C(DEG) γ (DEG) | 0 | 30 | 60 | 90 | 120 | 150 | 180 | 210 | 240 | 270 | 300 | 330 | | | | | | |
|-------------------|------|------|------|------|------|------|------|------|------|------|------|------|--|--|--|--|--|--|
| 0 | 6570 | 6570 | 6570 | 6570 | 6570 | 6570 | 6570 | 6570 | 6570 | 6570 | 6570 | 6570 | | | | | | |
| 5 | 6060 | 6049 | 5989 | 5929 | 5838 | 5818 | 5835 | 5812 | 5887 | 5952 | 6041 | 6088 | | | | | | |
| 10 | 4447 | 4464 | 4378 | 4297 | 4171 | 4157 | 4198 | 4165 | 4222 | 4291 | 4408 | 4467 | | | | | | |
| 15 | 2364 | 2366 | 2227 | 2184 | 2003 | 2006 | 2097 | 2024 | 2133 | 2197 | 2345 | 2399 | | | | | | |
| 20 | 809 | 755 | 738 | 713 | 691 | 662 | 684 | 681 | 669 | 728 | 733 | 800 | | | | | | |
| 25 | 339 | 333 | 319 | 320 | 297 | 300 | 307 | 287 | 300 | 312 | 323 | 329 | | | | | | |
| 30 | 163 | 158 | 150 | 153 | 142 | 145 | 150 | 140 | 145 | 151 | 157 | 160 | | | | | | |
| 35 | 90.3 | 88.5 | 86.3 | 86.3 | 83.1 | 84.1 | 85.7 | 83.8 | 83.8 | 87.1 | 87.5 | 90.7 | | | | | | |
| 40 | 55.8 | 56.4 | 54.7 | 54.3 | 52.8 | 53.5 | 54.3 | 53.6 | 53.3 | 53.7 | 54.6 | 55.6 | | | | | | |
| 45 | 37.9 | 38.6 | 37.6 | 37.1 | 36.2 | 36.5 | 36.9 | 36.7 | 36.3 | 36.3 | 36.7 | 37.5 | | | | | | |
| 50 | 25.6 | 26.4 | 25.9 | 26.5 | 25.7 | 26.0 | 25.9 | 25.2 | 24.9 | 24.5 | 24.6 | 25.3 | | | | | | |
| 55 | 15.8 | 16.2 | 15.9 | 16.1 | 15.8 | 16.0 | 15.8 | 15.3 | 15.0 | 14.7 | 15.0 | 15.6 | | | | | | |
| 60 | 5.65 | 6.12 | 5.88 | 6.22 | 5.97 | 6.04 | 5.91 | 5.41 | 5.19 | 4.93 | 5.20 | 5.52 | | | | | | |
| 65 | 1.82 | 1.82 | 1.72 | 1.79 | 1.90 | 1.91 | 1.82 | 1.76 | 1.70 | 1.77 | 1.83 | 1.85 | | | | | | |
| 70 | 1.01 | 0.97 | 0.99 | 1.04 | 1.07 | 1.10 | 1.04 | 0.93 | 0.91 | 1.00 | 1.04 | 1.04 | | | | | | |
| 75 | 0.17 | 0.19 | 0.17 | 0.22 | 0.17 | 0.16 | 0.15 | 0.14 | 0.14 | 0.16 | 0.14 | 0.15 | | | | | | |
| 80 | 0.07 | 0.05 | 0.04 | 0.06 | 0.04 | 0.04 | 0.05 | 0.04 | 0.04 | 0.06 | 0.04 | 0.04 | | | | | | |
| 85 | 0.05 | 0.03 | 0.03 | 0.05 | 0.03 | 0.03 | 0.05 | 0.03 | 0.03 | 0.05 | 0.03 | 0.03 | | | | | | |
| 90 | 0.00 | 0.00 | 0.00 | 0.00 | 0.00 | 0.00 | 0.00 | 0.00 | 0.00 | 0.00 | 0.00 | 0.00 | | | | | | |
| 95 | 0.00 | 0.00 | 0.00 | 0.00 | 0.00 | 0.00 | 0.00 | 0.00 | 0.00 | 0.00 | 0.00 | 0.00 | | | | | | |
| 100 | 0.00 | 0.00 | 0.00 | 0.00 | 0.00 | 0.00 | 0.00 | 0.00 | 0.00 | 0.00 | 0.00 | 0.00 | | | | | | |
| 105 | 0.00 | 0.00 | 0.00 | 0.00 | 0.00 | 0.00 | 0.00 | 0.00 | 0.00 | 0.00 | 0.00 | 0.00 | | | | | | |
| 110 | 0.00 | 0.00 | 0.00 | 0.00 | 0.00 | 0.00 | 0.00 | 0.00 | 0.00 | 0.00 | 0.00 | 0.00 | | | | | | |
| 115 | 0.00 | 0.00 | 0.00 | 0.00 | 0.00 | 0.00 | 0.00 | 0.00 | 0.00 | 0.00 | 0.00 | 0.00 | | | | | | |
| 120 | 0.00 | 0.00 | 0.00 | 0.00 | 0.00 | 0.00 | 0.00 | 0.00 | 0.00 | 0.00 | 0.00 | 0.00 | | | | | | |
| 125 | 0.00 | 0.00 | 0.00 | 0.00 | 0.00 | 0.00 | 0.00 | 0.00 | 0.00 | 0.00 | 0.00 | 0.00 | | | | | | |
| 130 | 0.00 | 0.00 | 0.00 | 0.00 | 0.00 | 0.00 | 0.00 | 0.00 | 0.00 | 0.00 | 0.00 | 0.00 | | | | | | |
| 135 | 0.00 | 0.00 | 0.00 | 0.00 | 0.00 | 0.00 | 0.00 | 0.00 | 0.00 | 0.00 | 0.00 | 0.00 | | | | | | |
| 140 | 0.00 | 0.00 | 0.00 | 0.00 | 0.00 | 0.00 | 0.00 | 0.00 | 0.00 | 0.00 | 0.00 | 0.00 | | | | | | |
| 145 | 0.00 | 0.00 | 0.00 | 0.00 | 0.00 | 0.00 | 0.00 | 0.00 | 0.00 | 0.00 | 0.00 | 0.00 | | | | | | |
| 150 | 0.00 | 0.00 | 0.00 | 0.00 | 0.00 | 0.00 | 0.00 | 0.00 | 0.00 | 0.00 | 0.00 | 0.00 | | | | | | |
| 155 | 0.00 | 0.00 | 0.00 | 0.00 | 0.00 | 0.00 | 0.00 | 0.00 | 0.00 | 0.00 | 0.00 | 0.00 | | | | | | |
| 160 | 0.00 | 0.00 | 0.00 | 0.00 | 0.00 | 0.00 | 0.00 | 0.00 | 0.00 | 0.00 | 0.00 | 0.00 | | | | | | |
| 165 | 0.00 | 0.00 | 0.00 | 0.00 | 0.00 | 0.00 | 0.00 | 0.00 | 0.00 | 0.00 | 0.00 | 0.00 | | | | | | |
| 170 | 0.00 | 0.00 | 0.00 | 0.00 | 0.00 | 0.00 | 0.00 | 0.00 | 0.00 | 0.00 | 0.00 | 0.00 | | | | | | |
| 175 | 0.00 | 0.00 | 0.00 | 0.00 | 0.00 | 0.00 | 0.00 | 0.00 | 0.00 | 0.00 | 0.00 | 0.00 | | | | | | |
| 180 | 0.00 | 0.00 | 0.00 | 0.00 | 0.00 | 0.00 | 0.00 | 0.00 | 0.00 | 0.00 | 0.00 | 0.00 | | | | | | |

C Range: 0 - 360DEG
C Interval: 30.0DEG
Test Speed: HIGH
Temperature:25.3℃
Operators:zoe
Test Date:2025-1-9

γ Range: 0 - 180DEG
γ Interval: 1.0DEG
Test System:EVERFINE GO-SPEX500_V1 SYSTEM V2.00.461
Humidity:65.0%
Test Distance:3.160m [K=1.0000]
Remarks: LAMP:BXRE-30H1000-A-83 Ra:95
LENS:PM-0132A 24R
NOT DRIVER:48V
30minutes warm-up